

PRELIMINARY

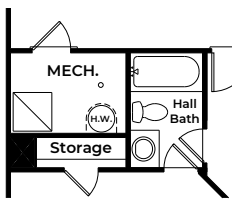
The Braxton Keswick Commons

3 Bedrooms | 2.5 Bathrooms | 2-Car Garage | 2,145 SF

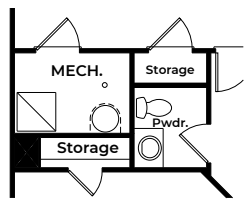


BASE PRICE
HOMESITE NUMBER
HOMESITE PREMIUM
OPTIONS
TOTAL

PRELIMINARY

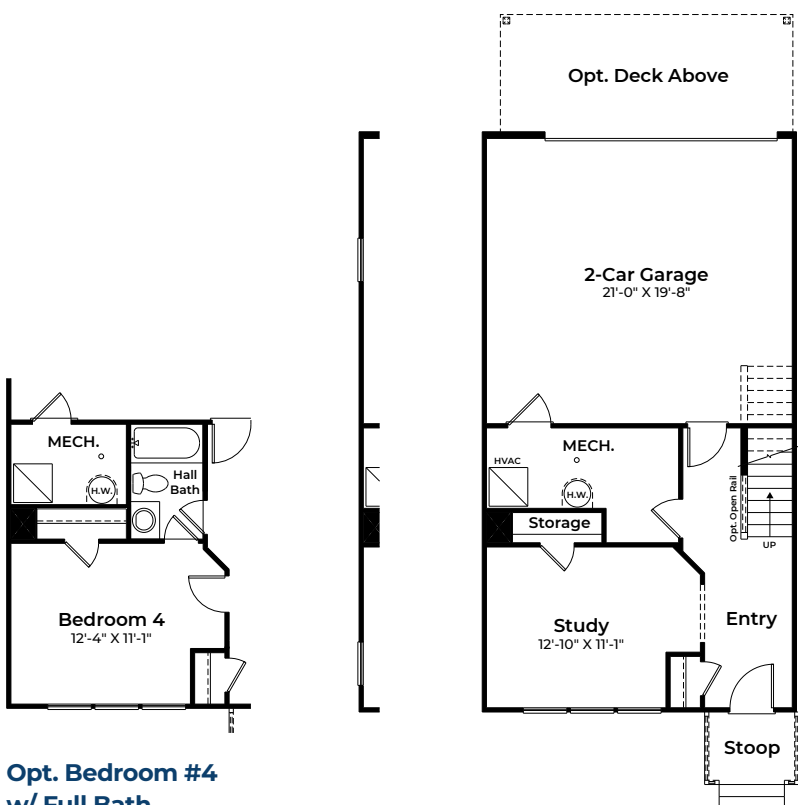


Opt. Full Bath



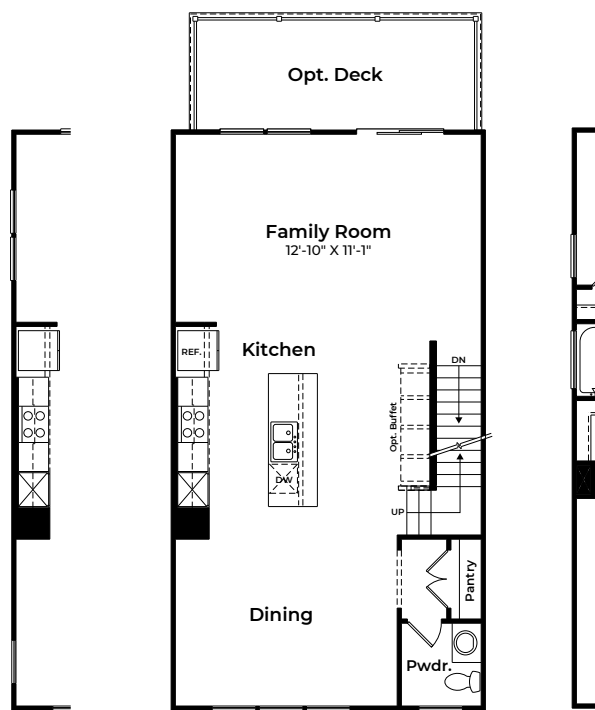
Opt. Powder Room

PRELIMINARY

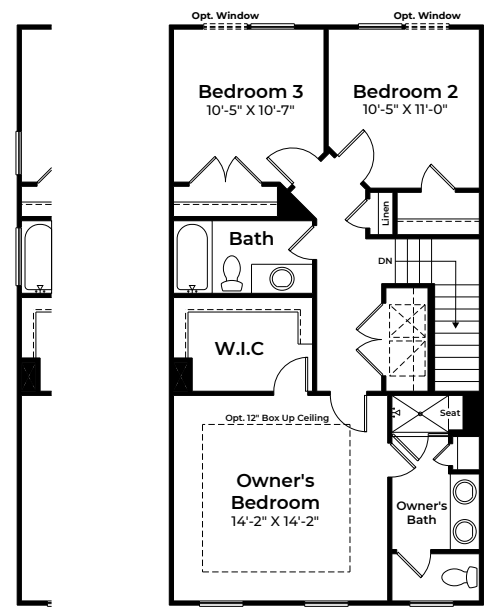


Opt. Bedroom #4
w/ Full Bath

LOWER LEVEL



MAIN LEVEL



UPPER LEVEL

PRELIMINARY